



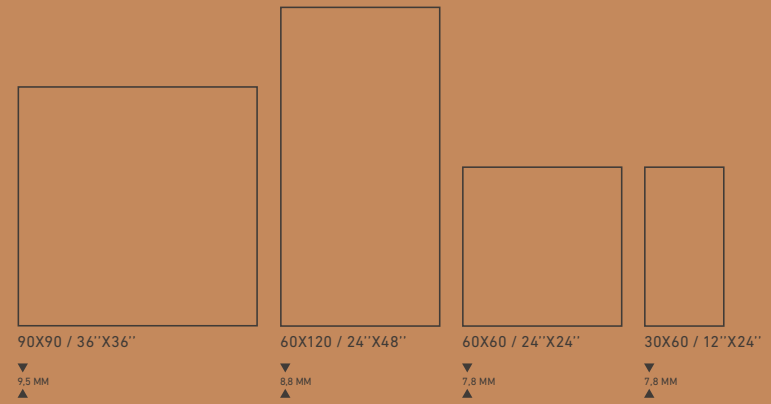
METALLICA

GRESART.
CERAMIC TILES



METALLICA

 GLAZED PORCELAIN TILES _GRÉS PORCELÁNICO VIDRADO _GRÉS CÉRAME ÉMAILLÉ
 FEINSTEINZEUG GLASIERT _GRÉS PORCELÁNICO
 EN 14411:2016 GROUP _GRUPO _GRUPE _GRUPPE **BIa**



MOSAICO 4,7X4,7
30X30



MOSAICO LOSANGO
23,6X28



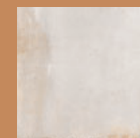
MOSAICO HEXAGONAL
26X31,5



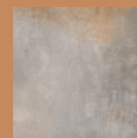
CHEVRON 3
30X30

USAGE _USO

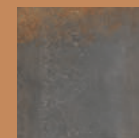
WALL, FLOOR, INTERIOR, COMMERCIAL, RESIDENTIAL



METALLICA WHITE



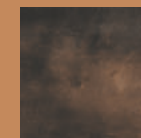
METALLICA SILVER



METALLICA TITAN



METALLICA OXYD



METALLICA DARK



METALLICA TITAN 60X120
METALLICA TITAN 90X90



THE
HOTEL

METALLICA TITAN 60X120
METALLICA SILVER 60X120
METALLICA SILVER 90X90



METALLICA WHITE 30X90
METALLICA WHITE LINES 30X90
METALLICA TITAN QUADRI 30X90
METALLICA TITAN 90X90



METALLICA TITAN 60X120 SP

METALLICA

 GLAZED PORCELAIN TILES _GRÉS PORCELÁNICO VIDRADO _GRÈS CÉRAME ÉMAILLÉ
 FEINSTEINZEUG GLASIERT _GRÉS PORCELÁNICO
EN 14411:2016 GROUP _GRUPO _GROUPE _GRUPPE **Bla**



METALLICA WHITE
GP 0671



METALLICA SILVER
GP 0672



METALLICA TITAN
GP 0673



METALLICA OXYD
GP 0674



METALLICA DARK
GP 0675

METALLICA

☛ WHITE BODY WALL TILES _REVESTIMENTOS EM PASTA BRANCA _CARREAUX DE MUR EN PATE BLANCE
WEISSEN TON WANDFLIESEN _REVESTIMIENTOS EN PASTA BLANCA

EN 14411:2016 GROUP _GRUPO _GROUPE _GRUPPE BIII



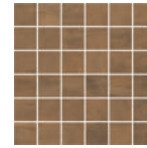
METALLICA WHITE
MOSAICO 4,7X4,7
30X30



METALLICA WHITE
CHEVRON 3
30X30



METALLICA WHITE
MOSAICO LOSANGO
23,6X28



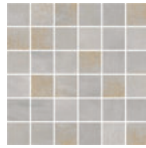
METALLICA OXYD
MOSAICO 4,7X4,7
30X30



METALLICA OXYD
CHEVRON 3
30X30



METALLICA OXYD
MOSAICO LOSANGO
23,6X28



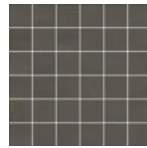
METALLICA SILVER
MOSAICO 4,7X4,7
30X30



METALLICA SILVER
CHEVRON 3
30X30



METALLICA SILVER
MOSAICO LOSANGO
23,6X28



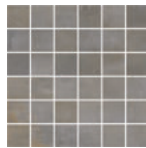
METALLICA DARK
MOSAICO 4,7X4,7
30X30



METALLICA DARK
CHEVRON 3
30X30



METALLICA DARK
MOSAICO LOSANGO
23,6X28



METALLICA TITAN
MOSAICO 4,7X4,7
30X30



METALLICA TITAN
CHEVRON 3
30X30



METALLICA TITAN
MOSAICO LOSANGO
23,6X28



METALLICA MIX
MOSAICO 4,7X4,7
30X30



METALLICA MIX
CHEVRON 3
30X30




METALLICA MIX
MOSAICO LOSANGO
23,6X28

SUSTAINABILITY



WE MEET
LEED™ AND BREEAM®
REQUIREMENTS

| Dynamic Product, references of EPREVA: | % recycled material included | Source: |
|---|------------------------------|---|
| Floor tiles: Glazed ceramic, Glazed porcelain | 20-27% | Internal quality data; internal wastes from the process |
| Wall tiles: White body, Monoporena | 28% | External data; external wastes |




ECO-BODY



28%
RECYCLED

THIS PRODUCT IS
LEED ACCORDANT

ÉMISSIONS DANS L'AIR INTÉRIEUR*



A+

A+ A B C

GRÉS PORCELÂNICO • GLAZED PORCELAIN
GRÈS CÉRAME • FEINSTEINZEUG



DIN EN 16165
Annex B



DIN EN 16165
Annex A



DIN EN 16165
Annex C



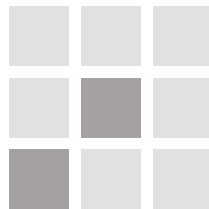
ANSI A326.3



MOHS

FULL HD DIGITAL PRINTING TECHNOLOGY

VARIAÇÕES DE TONALIDADE • VARIATION IN TONE
VARIATIONS DE TONALITÉ • FARBABWEICHUNGENN

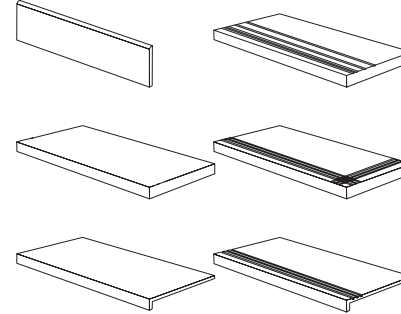


V2

Aleatória • Random • Aleatoire • Warnung

SURFACE _SUPERFÍCIE
FINISH _ACABAMENTO

MATT
SEMI-POLISHED (SP)
NATURAL (NAT)
RECTIFIED (R)



SKIRTINGS _RODAPÉ 9X90

SKIRTINGS _RODAPÉ 9X120

SKIRTINGS _RODAPÉ 9X60

STEP _DEGRAU 45X90

STEP _DEGRAU 60X120

STEP _DEGRAU 60X60

STEP _DEGRAU TEC. 30X90

STEP _DEGRAU TEC. 30X120

STEP _DEGRAU TEC. 30X60

SIZES _FORMATOS
THICKNESS _ESPESSURA

30X60 SP
60X60 R
60X60 SP
60X60 NAT
60X120 R
60X120 SP
90X90 R
90X90 SP

Gresart - Cerâmica Industrial S.A.

Apartado 39 - EC de Oliveira do Bairro | 3771-954 Oliveira do Bairro | Portugal

Tel. +351 234 740 200 | Fax. +351 234 747 462

gresart@gresart.com | www.gresart.com



100% MADE IN
PORTUGAL



TECHNICAL DATA

Grés Porcelânico Vidrado
Glazed Porcelain Tiles
Grès Cérame Émaillé
Feinsteinzeug Glasiert
Grés Porcelánico

| EN 14411:2012 | Características Técnicas Technical Data Caractéristiques Techniques Technische Daten Datos Técnicos | Norma de Ensaio Test Norm Norme du Test Testnormen Norma de Prueba | Anexo • Annex Annexe • Anhang Grupo • Group Groupe • Gruppe | Garantido Guaranted Garanti Gewährleistet Garantizado |
|---------------|---|--|--|---|
| | Comprimento e Largura Length and Width Longueur et Largeur Länge und Breite Longitud y Anchura | | ± 0,6 % | Garantido Guaranted Garanti Gewährleistet Garantizado |
| | Espessura Thickness Épaisseur Dichte Grosor | | ± 5 % | Garantido Guaranted Garanti Gewährleistet Garantizado |
| | Rectilinearidade das Arestas Edge Warpages Rectitude des Arêtes Geradlinigkeit der Kanten Rectitud de los Bordos | EN ISO 10545-2 | ± 0,5 % | Garantido Guaranted Garanti Gewährleistet Garantizado |
| | Medida da Ortogonalidade Rectangularity Angularité Rechtwinkligkeit der Kanten Grado de Ortogonalidad | | ± 0,5 % | Garantido Guaranted Garanti Gewährleistet Garantizado |
| | Medida da Planaridade Surface Flatness Planéité de la Superficie Ebenfächigkeit Medición de Planaridad | | ± 0,5 % | Garantido Guaranted Garanti Gewährleistet Garantizado |
| | Absorção de Água Water Absorption Absorption D'eau Wasseraufnahme Absorción de Agua | EN ISO 10545-3 | $E_b \leq 0,5\%$ | Garantido Guaranted Garanti Gewährleistet Garantizado |
| | Resistência à Flexão Breaking Strength Résistance à la Flexion Biegefestigkeit Resistencia a la Flexión | EN ISO 10545-4 | $\geq 35 \text{ N/mm}^2$ | Garantido Guaranted Garanti Gewährleistet Garantizado |
| | | | $\geq 1300 \text{ N}$ | Garantido Guaranted Garanti Gewährleistet Garantizado |
| | Resistência à Abrasão Resistance to Abrasion Résistance à L'abrasion Abnutzungsbeständigkeit Resistencia a la Abrasion | EN ISO 10545-7 | Segundo os Valores do Fabricante According to Manufacturer Requirements Selon les Valeurs du Fabricant Gemäss der Werte des Herstellers Según los Valores del Fabricante | Indicação na Tabela de Preços Indication on Price List Indication sur la Liste de Prix Hinweis auf der Preisliste Indicación en la Tabla de Precios |
| | Resistência ao Choque Térmico Resistance to Thermal Shock Résistance aux Chocs Thermiques Resistenz Gegen Thermischen Schock Resistencia ao Choue Térmico | EN ISO 10545-9 | Exigido Required Exigée Gefordert Exigido | Garantido Guaranted Garanti Gewährleistet Garantizado |
| | Resistência ao Fendilhamento Cracking Resistance Résistance aux Trésaillures Abnutzungsbeständigkeit Resistencia a lo Agrietado | EN ISO 10545-11 | Exigido Required Exigée Gefordert Exigido | Garantido Guaranted Garanti Gewährleistet Garantizado |
| | Resistência ao Gelo Frost Resistance Résistance au Gel Frostbeständigkeit Resistencia al Hielo | EN ISO 10545-12 | Exigido Required Exigée Gefordert Exigido | Garantido Guaranted Garanti Gewährleistet Garantizado |
| | Resistência aos Ácidos e Bases Resistance against Acids and Bases Résistance aux Acides et Bases Beständigkeit Gegen Säuren u Laugen Resistencia a los Ácidos y Bases | EN ISO 10545-13 | Segundo os Valores do Fabricante According to Manufacturer Requirements Selon les Valeurs du Fabricant Gemäss der Werte des Herstellers Según los Valores del Fabricante | Mínimo: GLB Minimum: GLB Minimum: GLB Minimum: GLB |
| | Resistência aos Produtos de Limpeza Domésticos Resistance to Household Cleaning Products Résistance aux Produits Ménagers de Nettoyage Beständigkeit Gegen Haushaltsprodukte Resistencia a los Productos de Limpieza Domésticos | | Mínimo: GB Minimum: GB Minimum: GB Minimum: GB | Garantido Guaranted Garanti Gewährleistet Garantizado |
| | Resistência às Manchas Staining Resistance Résistance aux Taches Beständigkeit Gegen Flecken Resistencia a las Manchas | EN ISO 10545-14 | Mínimo: Classe 3 Minimum: Class 3 Minimum: Classe 3 Minimum: Klasse 3 Mínimo: Clase 3 | Garantido Guaranted Garanti Gewährleistet Garantizado |



GRESART.
CERAMIC TILES